



# POINTS OF PRIDE



608.987.0740

MINERALPOINTSCHOOLS.ORG

## #POINTERNATION



21.1

2020-21 ACT COMPOSITE  
STATE AVERAGE 19.1



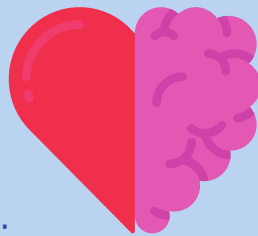
ENDOWMENT FUND GRANTS GIVEN TO  
STAFF MEMBERS FOR  
CLASSROOM PROJECTS  
**\$6,448**

FIRST GRADUATING CLASS

1879

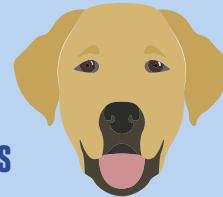


- FORENSICS · FFA · MUSIC HONORS ·
- FUTURE BUSINESS LEADERS OF AMERICA ·
- SOLO & ENSEMBLE · TRAP SHOOTING ·
- GOLF · GIRLS BASKETBALL ·
- CROSS COUNTRY · GYMNASTICS ·
- SKILLS USA · DELTA KAPPA GAMMA ·
- TRACK & FIELD · WRESTLING ·



MENTAL HEALTH  
MATTERS WEEK

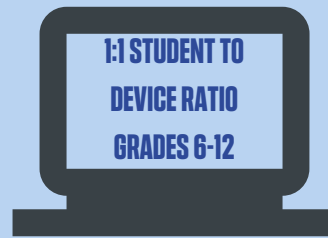
TWO  
THERAPY DOGS



ELEMENTARY RENOVATION &  
ADDITION COMPLETE

\$972K

SCHOLARSHIPS TO  
2022 SENIORS



1:1 STUDENT TO  
DEVICE RATIO  
GRADES 6-12



4

BRONZE WISCONSIN  
SCHOOL HEALTH AWARDS



257

COLLEGE CREDITS EARNED  
IN 2021-22 BY  
HS STUDENTS



## OPTIONS IN EDUCATION

Providing **Personalized** Learning  
in Southwest Wisconsin

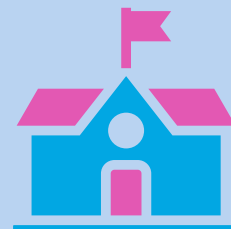


5 HERB KOHL  
STAFF WINNERS &  
4 NATIONALLY  
CERTIFIED STAFF

HS COMMUNITY



DAY OF SERVICE



MINERAL POINT SCHOOLS  
ESTABLISHED

1829



MP ELEMENTARY  
MODEL PLC  
SCHOOL  
ONE OF 7 IN WISCONSIN