

White & Blue Review

2023-24 AND BEYOND

MINERAL POINT SCHOOLS EST. 1829 • FIRST GRADUATING CLASS 1879



Points of Pride

A SAMPLING OF OUR SUCCESS



Exceeding Expectations

WI Department of Public Instruction State Report Card

3.8

average AP exam score (3 is needed to earn college credit)

22

ACT Composite score for 2022-23 (state average: 19.3)



83.6%

of 2024 Seniors had a 2.8 GPA or better

\$1.6m

Scholarships to 2024 Seniors

861

College Credits Earned in 23-24 by high schoolers



Bobby Allbright

Senior graduate with perfect ACT score & Presidential Scholar Nominee

Matthew Goninen

First-ever MPHS American Legion Boys Nation participant

7 Herb Kohl Fellows on Staff

- Matt Nevers (Middle/High School Band)
- Kris McCoy (Middle/High School Librarian)
- Micki Uppena (Elementary School Librarian)
- Cindi Nothem (High School Math Teacher)
- Ashley Calderon-McHugh (Middle/High School Choir Teacher)
- Erika Brunson (Middle/High School Counselor)
- Kristin Staver (High School English Teacher)

3 Nationally Board Certified Staff

- Kimberly Diefenbach (Elementary School Interventionist)
- Rachael Schroeder (District Reading Specialist)
- Penny Wiegel (1st Grade Teacher)

Model Professional Learning Community Elementary School (one of only seven in the state)

Options in Education personalized learning program

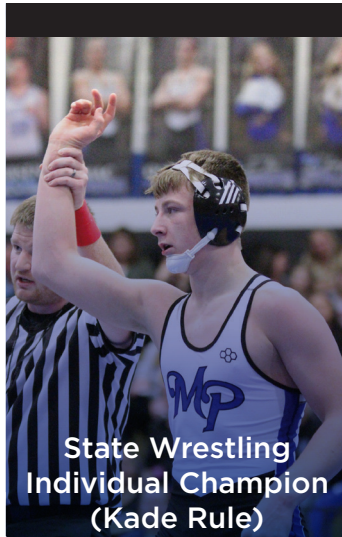
Positive Open Enrollment in trend (35 students 10 years ago, 105 students this year)

77.6% of middle/high school students participate in extracurricular activities

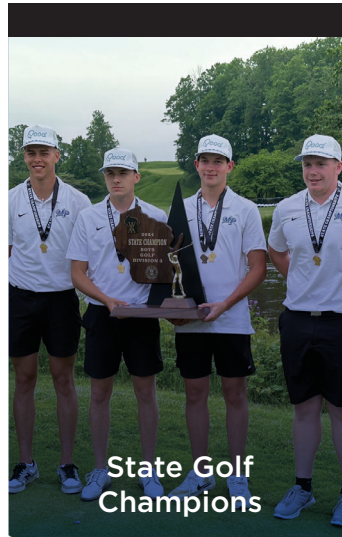
Athletics



State
Boys Basketball
Champions



State Wrestling
Individual Champion
(Kade Rule)



State Golf
Champions

State Gymnastics
Team Qualifier

State Trap
Team Qualifier

National Trap
Individual Qualifier
(Kasen Knight)

State Boys & Girls
Cross Country
Team Qualifier

State Boys & Girls
Track & Field
Qualifiers

State Wrestling
Qualifiers

Arts



State Civics Games Team Qualifier

State Forensics Excellence in Speech Award

(one of only 15 schools in the state)

- 12 Gold medals
- 6 Silver medals
- 1 Bronze medal



State Music Honors Project participants

- Josie Dunn, Libby Dunn, Abby Webb, Elliott Webb, James Webb



State Solo & Ensemble

- 4 Exemplary Performance winners
- 12 Gold medals
- 3 Silver medals



Musical Jerry Award winners

- Libby Dunn and Finn Renwick

Teen Art Mentor Program Art Show State Qualifiers

- Libby Dunn and Payton Heins

Skills

State & National Future Business Leaders of America

National Finalists & State Champions

Matthew Goninen, Madisyn Heim, Eli Lindsey (Broadcast Journalism)

National Qualifiers

Kalea Biddick, Ella James (Community Service Project), Julianna Cool (Journalism)

National Alternates

Derek Hottenstein (Personal Finance), Violet Renwick (Intro to Business Procedures)



9th Place Nationally
Kalea Biddick
(Business Communications)



State & National FFA

State Champion & National Finalist

Joey Robinson

(Agricultural Mechanics Repair and Maintenance Entrepreneurship)

State Champion & National Finalist

Luke Schubert (Fiber & Oil Crop Production)

State Champion & National Qualifiers

Michael Edgington, Aiden Patterson, Cameron Patterson, Luke Schubert
(Meat Judging Team)

State Runner-Up

Annie Robinson

(Nursery Operations, Goat Production, and Agricultural Sales)

State Participants

Ellie Robinson (Sheep Production), Payton Heins, Annie Robinson, Ellie Robinson, Regan Schuette (Floriculture Team), Erica Rose Ludlum, Johnny Robinson, Faye Schuette, Riley Sennhenn (Livestock Judging Team)



Pointer Media
news program

46 Youth Apprenticeships

27 Certified Youth Apprentices



State & National Skills USA

- National Qualifier & State Champion
Joss James (Cosmetology)
- National Alternates
Madisyn Heim, Ellery Massey
(Television Video Production)

Other Points of Pride



Excellence in Education & Community Endowment Fund grants



2 therapy dogs

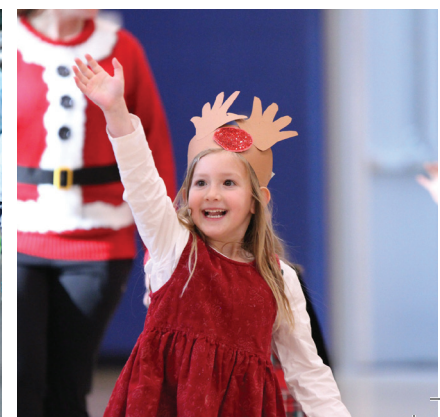


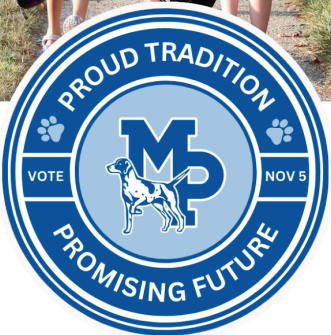
Pointer Kids Club new before/after school care program



Sources of Strength

The mission of Sources of Strength is to prevent adverse outcomes by increasing wellbeing, help-seeking, resiliency, healthy coping, and belonging by harnessing the power of peer social networks.





MINERAL POINT
UNIFIED SCHOOL DISTRICT
OPERATING REFERENDUM

NOV. 5 OPERATING REFERENDUM

What will the referendum allow the District to continue to do?



Maintain Academic Offerings, Class Sizes & Co-Curriculars



Retain & Attract High Quality Staff



Stay Current with Technology, Building Maintenance & Safety



Keep a Healthy Fund Balance for Emergencies

What is on the ballot?

"Shall the Mineral Point Unified School District, Iowa and Lafayette Counties, Wisconsin be authorized to exceed the revenue limit specified in Section 121.91, Wisconsin Statutes, by \$1,300,000 for the 2025-2026 school year and thereafter, for recurring purposes consisting of ongoing operational expenses?"

When a district passes a recurring referendum, it means that the money is added to its base revenue and stays there. **It does not mean the district is asking for \$1,300,000 each year.**

The intent is to levy up to an additional:

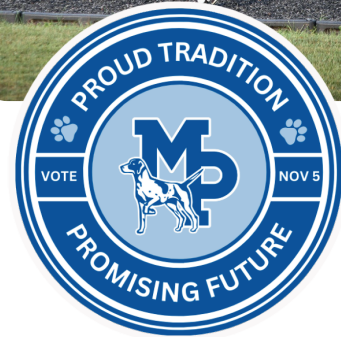
- \$700,000 for the 2025-26 school year;
- \$150,000 for the 2026-27 school year;
- \$175,000 for the 2027-28 school year;
- and \$200,000 for the 2028-29 school year, for a total of an additional \$1.3 million.

Without a referendum, the District's operational budget will not be able to maintain its current programs and services.

What is the estimated tax impact?

Total of first four years would be \$162 annually per \$100,000 of valuation, which then re-sets the base levy for the 2029-30 school year and beyond.

YEAR	ANNUAL IMPACT	MONTHLY IMPACT
	per every \$100,000 of valuation	per every \$100,000 of valuation
2025-26	\$62	\$5.17
2026-27	\$32	\$2.67
2027-28	\$33	\$2.75
2028-29	\$35	\$2.92



MINERAL POINT
UNIFIED SCHOOL DISTRICT
OPERATING REFERENDUM

How did we get here?

1993 Revenue Limits

Schools are locked in to what they spent per student in 1993, unless they ask taxpayers for an operational referendum

ESSER Ending

ESSER funds were designed for one-time use items during the pandemic. Must be spent by 9/30/24.

State Aid not Tied to Inflation

\$0 increase for 6 of the last 10 years causing funding to lag approx. \$3,000 per student

Increasing Cost of Operations

Within the last year: Water 18%, Food 10%, Electricity 9%, Gas & Fuel 7%, Property & Casualty Insurance 7%, Health Insurance 6.5%

What if the referendum doesn't pass?

- Cuts will not be enough
- Another referendum will still be needed
- Some possible reductions include:
 - Less Academic Offerings
 - Reduced Co-Curriculars
 - Staff Reductions, Larger Class Sizes
 - Less Competitive Wages & Benefits
 - Deferred maintenance, technology & safety updates
 - Longer Transportation
 - Depleted Fund Balance

Cuts will affect the quality of education the community expects from our schools.

Are other local (CESA 3) school districts having an operating referendum in November? Yes:

- | | |
|--------------|--------------------|
| • Argyle | • Iowa-Grant |
| • Belmont | • Ithaca |
| • Cuba City | • Mineral Point |
| • Darlington | • Platteville |
| • Dodgeville | • Prairie du Chien |
| | • River Ridge |

What have we done? Some things include:

- Paid less than CPI for staff wage increases in several recent years
- Increased staff share of health insurance
- Used ESSER money to offset increases
- Cuts to the technology budget
- Cuts to the maintenance budget
- Moved technology expenses to ERate
- Brought back the food service program
- Analyze the true need for positions
- Competitively bid on large projects
- Reduced lease agreements (copiers/printers)
- Frozen or reduced classroom budgets
- Extended the life of curriculum and technology
- Took over Options In Education School
- Increased revenue in interest income
- Open Enrollment increase
- Advertising sales
- Fund 46 Capital Maintenance Fund
- Excellence In Education Endowment Fund provides grants to classroom projects through private donations
- Community Foundation gave large grant for before/after school program for first year
- Booster Group financial support
- Youth Apprenticeships – local businesses that provide work options
- Increase successful grant applications

How can you learn more?

- Scan the QR Code
- Contact Superintendent Mitch Wainwright to have your questions answered or set up a presentation for your community group.



📞 608-987-0740

✉️ mitch.wainwright@mp.k12.wi.us

🌐 <https://mineralpointschools.org/2024-referendum/>

Mineral Point Unified
School District
705 Ross Street
Mineral Point, WI 53565

Phone: (608) 987.0740
Fax: (608) 987.3766

www.mineralpointschools.org
www.facebook.com/
MineralPointSchoolDistrict

*Postage generously donated by
the Mineral Point Excellence in
Education endowment fund.*



A MESSAGE FROM THE SUPERINTENDENT

mitch.wainwright@mp.k12.wi.us • 608-987-0740

Dear Pointer Education's Partners

As one of the oldest publicly supported schools in the state, we have a long standing tradition of success and Pointer Pride. As I've been meeting with many groups in the community regarding our operating referendum, one thing is obvious - shared pride in our schools, which I hope you feel reading this newsletter. If you have any questions about the vote on November 5, please reach out. As always, thank you.

Mitch Wainwright