

# The A B C's of Kindergarten



---

### **Mineral Point Unified School District: Nondiscrimination Policy**

The Mineral Point Unified School District, in accordance with Title IX of the Educational Amendments of 1972 and other Federal and State regulations, hereby declares that it is committed to the principle of equal education and employment opportunity and, accordingly, does not discriminate as to sex, race, color, religion, national origin, ancestry, creed, pregnancy, marital or parental status, sexual orientation, or physical, mental, emotional, or learning disability. Any inquiries or complaints alleging non-compliance with Title IX of the Educational Amendments of 1972 or other Federal and State civil rights or nondiscrimination regulations shall be referred to the Title IX Coordinator, Luke Francois- District Superintendent, of the Mineral Point Unified School District.

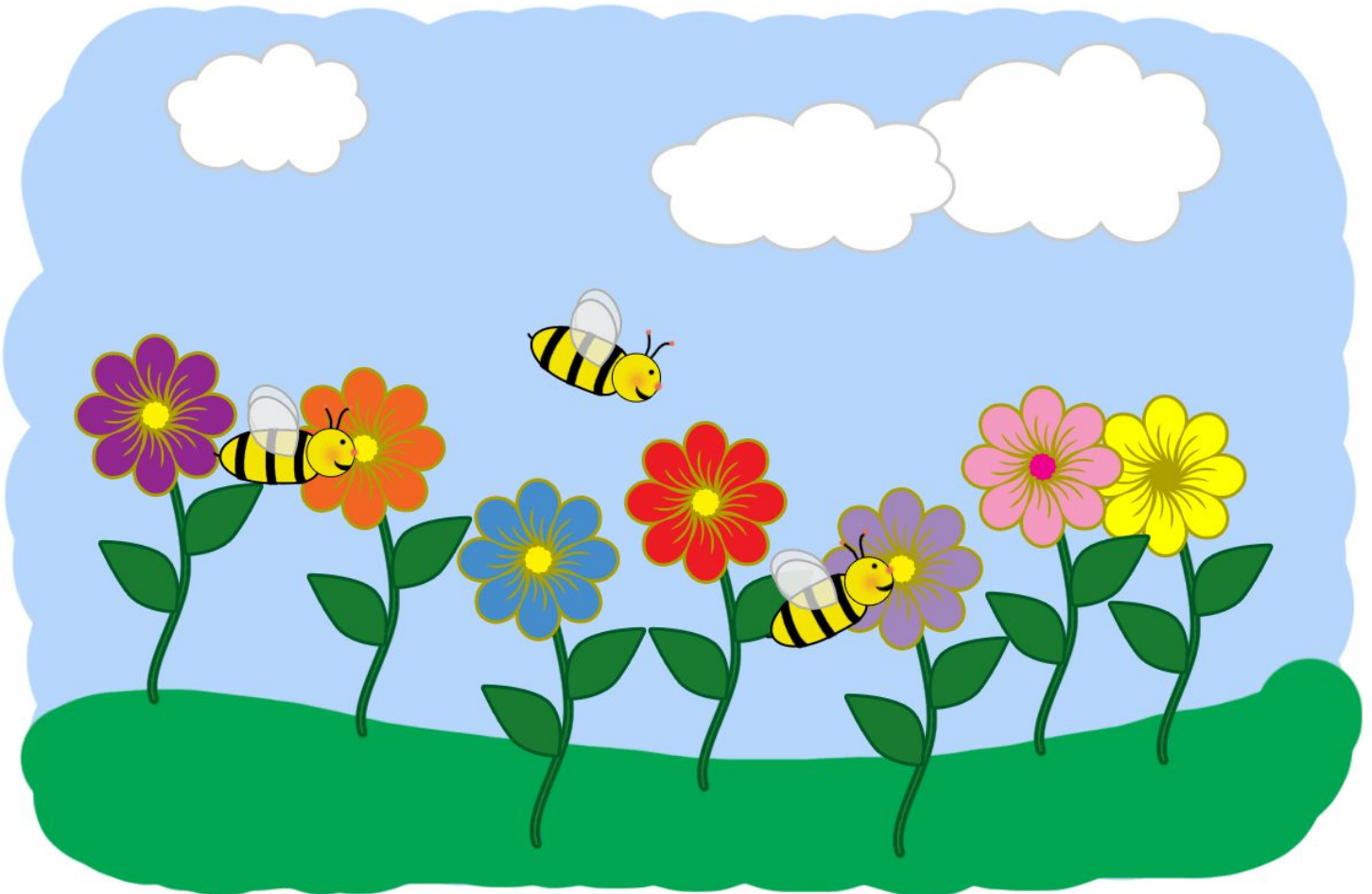
---

# Kindergarten

by Jeanene Engelhardt

Garden of blocks.  
Garden of tunes.  
Garden of crayons  
And painted balloons.

Garden of books,  
ABC's,  
Numbers, field trips  
And games to please. Garden of friends.  
Garden of rhymes.  
A garden called kinder—  
Wonderful times!



## **A a is for:**

**alphabet.** We concentrate on letters using a phonetic and literature-based language arts program.

**arrival time** - 7:45 a.m. Our day will be 8:00 a.m. - 3:25 p.m. on Monday, Tuesday, Thursday and Friday. Every Wednesday we will dismiss at 2:00 p.m.

## **B b is for:**

**backpacks.** Please send them each day and check them each night for correspondence from school.

**bus.** We walk the bused children to the bus each afternoon to assure their safety and comfort.

**birthday treats.** We love them! We will celebrate summer birthdays also, if you would like to do so.

**breakfast.** Our most important meal. Breakfast is served every morning beginning at 7:30 a.m. for those who wish to partake.

## **C c is for:**

**creativity.** artistic, cognitive and dramatic.

**conferences.** They are scheduled twice each year, but we are available to schedule additional times upon your request.

**clothes.** Please label coats, snowpants and boots. Sometimes they all look alike! It is important to buy clothing that your child can put on by themselves. Snow boots that tie are too hard to keep tied and difficult zippers cause much frustration for children.

**Curriculum.** Our curriculum is developmentally appropriate and designed to meet student needs.

## **D d is for:**

**discipline.** We use three rules - WORK, RESPECT, BELONG. Please support this program by discussing appropriate behavior with your child.

**drop off.** Dropping off your child in the front of the building each morning increases his/her confidence and independence.

## **E e is for:**

**early dismissal and early releases.** Each Wednesday and on other occasions your child will be dismissed at an earlier time than usual. On days of inclement weather – all families will be notified using the Skylert Notification Service.

**eating lunch.** We eat all together in the multipurpose room.

**Email.** Emails can be directed to each kindergarten teacher for correspondence. However, please note that sometimes emails are unable to be checked until the end of the day.

## **F f is for:**

**field trips.** Please check your child's backpack for permission slips and requests for chaperones. Trips are not paid for by the district and we will be collecting money as needed.

**G g is for:**

**guidance.** The children will be working with our guidance counselor on social skills and protective behaviors.

**H h is for:**

**handwriting.** Our handwriting instructions are attached.

**I i is for:**

**independence.** Taking responsibility for one's own things is an emphasis in kindergarten. **Please allow your child to pack and unpack backpacks and dress themselves. Taking the time to show them how to zip a coat and tie shoes will add to their independence.**

**J j is for:**

a year **jam-packed** with learning and fun!!

**K k is for:**

**kindergarten.** Our philosophy is that children come to us with diverse abilities and experiences. Our focus is to assist in the areas of social, emotional, physical, attitudinal and cognitive development.

**L l is for:**

**lunch money.** We eat lunch at 11:00 a.m. Parents are welcome to join us. Two hot lunch choices are available each day. A monthly menu is available on the districts' website. Milk for sack lunches is also available to purchase. We offer an afternoon milk break. (Costs for all of the above will be announced at a later date.)

**lunch account.** Meals and milk are required to be paid for in advance. Money is deposited in your family account and as your child eats lunch, breakfast or drinks milk the cost is deducted from your account. Payment notices are automatically sent via email/phone message when the family balance is \$15 or less.

**library skills and library book check out.** A schedule will be sent home at the beginning of the school year.

**lice!!** Please check frequently and notify the office if your child has them. We have a certain procedure you should follow.

**LOST & FOUND.** Please check it often and report any lost items to us. We can help locate them. LABEL EVERYTHING, especially your child's outerwear and boots.

**M m is for:**

**manipulatives for motivational math.** We explore concepts - sorting by size/shape/color, counting, patterns, more/less/same, time, money, graphing, measures and estimations. We do problem solving and numeration problems everyday with our calendar.

**milk break.** We have it in the afternoon. Milk break is payable through the family food service account.

**morning meeting.** Our daily sharing time is a time to promote language development and confidence. At times we will ask for specific things to be brought to school for sharing.

## **N n is for:**

**notes.** Please notify us if there is to be a change in your child's regular routine. The dismissal change form can be completed online at <http://mineralpointschools.org/mpes/form/dismissal-form/>

**nurse.** The school nurse needs a special permission form filled out and signed by your physician before administering any medication to your child.

## **O o is for:**

**order forms** for book clubs. We send them home throughout the year.

**office.** If your child needs to ride a bus other than to their regular destination, you must fill out a Bus Permission Form (available in the Parent - Student Handbook) or complete the dismissal change form found online at <http://mineralpointschools.org/mpes/form/dismissal-form/> . The completed form must be signed and dated in the office in order for it to be valid. We want your children to be safe and in the right place!

## **P p is for:**

**playtime!** We offer creative type centers for children to reinforce and develop skills through play.

**parties.** Watch for notes concerning special days in school.

**parking.** Please do not park in front of the building. It is a no parking zone. Buses use Front Street for drop off and loading. Parents need to park in the upper parking lot in the morning and in the lower parking lot in the afternoon. If you are leaving your car parked at school during the day, it must be in the upper lot because our lower lot is used as a playground during the day.

**pick-up.** Any child being picked up at the end of the day should meet their parents in the lower parking lot. Children are escorted to vehicles, by staff members, for their safety.

**Pointer Press.** A weekly online, school-wide newsletter that keeps you up-to-date with reminders, important announcements and dates to remember.

## **Q q is for:**

**quiet reading time.**

**quick.** This year will go so quickly that you will wonder where it went. Take time to enjoy your kindergartner.

## **R r is for:**

**report cards.** Formal assessments are made throughout the year. You will receive a report card at the end of each semester.

**recess.** Fresh air and exercise helps us all stay healthy. When your child arrives at school he/she is expected to go right out for recess or up to the breakfast program.

**reading.** Your child will be reading high frequency words and emergent readers by the end of the school year.

### **S s is for:**

**special classes.** Kindergarten children will have a music teacher, gym teacher and an art teacher.

**social skills.** We concentrate on these throughout the year - "once social skills fall into place, the academics follow right behind."

**supplies.** A list is included with the registration materials.

**snacks.** You will be notified when we need more snacks to have with our milk.

**schedules.** Your child will bring home a weekly schedule at the beginning of the school year.

### **T t is for:**

**telephone.** Please call us if you have questions. You can reach us by calling 987-0739 and our extension numbers are Beinborn - 386, McDonald - 117 and McGuire - 143.

### **U u is for:**

**underwear.** The first weeks can be stressful for some and accidents tend to happen. An extra set of clothes and underwear can be kept in their cubbies for such occasions. Extra pairs of dry socks in the winter are most helpful.

### **V v is for:**

**variety of themes.** We have central themes incorporating language arts, science, social studies, math and health.

**visiting us.** We enjoy sharing our kindergarten day with parents. Please let us know a day in advance if you would like to visit. Some days are better visiting days than others! We also must limit our visitors to adults only. Pre-school children tend to be disruptive when they are asked to conform to a school routine.

### **W w is for:**

**worksheets.** Our philosophy involves more hands-on activities, using worksheets more as an assessment measure.

**WIN** (What I Need). Your child will have the opportunity to work on particular skills during WIN time.

### **X x is for:**

**"x-tra" supplies.** You may be asked to provide us with treasures such as baby food jars, egg cartons and other household items from time to time. We thank you in advance.

### **Y y is for:**

**"you".** You are the most important person in your child's life.

### **Z z is for:**

**"zzz".** Going from half day sessions to full day sessions can be very tiring. Your child will be given the opportunity to rest quietly each day to begin the school year and less as the year progresses.